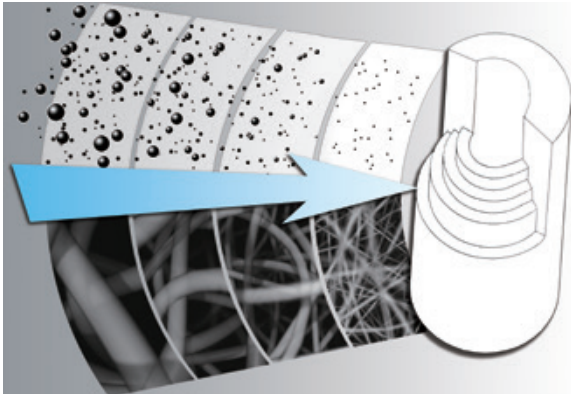


Industrial Melt-Blown Filter Cartridges

Four-layer structure design. It is formed by spinning at high temperature and pressure after the Polypropylene is melted. The structure is loose outside and dense inside, which can evenly capture different sizes particles in the filter cartridge. With excellent filtration efficiency and dirt holding capacity, it can maintain stable flow, differential pressure and long service life. The fiber structure is stable to ensure filtration quality and applicable to precision industrial processes.



- Made from superfine PP fibers, ensuring exceptional filtration efficiency
- Four-layer design enhances dirt holding while maintain the longer service life
- Filter surface and inner core are specially treated to make sure no fiber release
- Stable structure design keeps the contaminant from release
- 100% Polypropylene material. No adhesive. Good chemical compatibility. No fiber release
- PP material is FDA 21 CFR compliant



Material	Polypropylene
Length	5, 6, 9.75, 10, 19.5, 20, 29.5, 30, 39, 40 inch and Customization
Micron Rating	0.5, 1, 5, 10, 25, 50, 75, 100 μm
End Cap	DOE, 2-222 Flat, 2-222 Fin, 2-226 Flat, 2-226 Fin
Operating Data	ΔP : 3.0 bar at 25°C, 2.0 bar at 50°C, 1.0 bar at 70°C
Applications	PCB, Electroplating, Reverse Osmosis Pretreatment, Reclaimed Water Treatment, Chemical and Petrochemical Processing, Food and Beverage